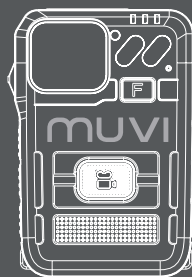


# TITAN



# Muvi HD Pro3

## Software Guide

## Contents

### Parameter Settings

#### Parameters

Video resolution .....	02
Bitrate quality .....	03
Video loop .....	04
Pre-recording .....	05
Clip time .....	06
Indicator light .....	06
Indicate sound .....	07
Infrared .....	07

#### Camera Info

Clear file .....	08
Storage space .....	08
Device ID .....	09

#### Device Password

Password update .....	09
-----------------------	----

#### User Info

User .....	10
Group number .....	10

### Data Importing .....

11

### Removable Disk .....

12

### Local Data .....

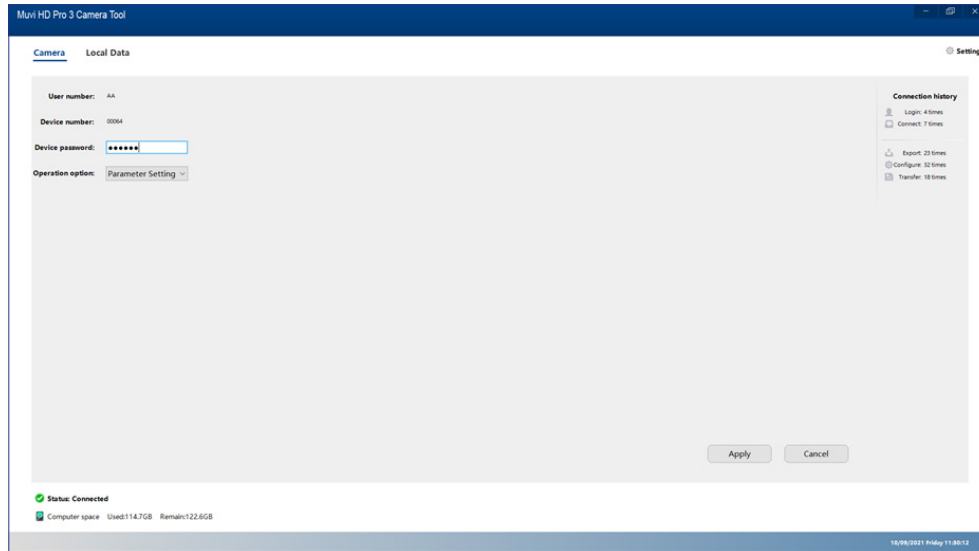
13

### Software Settings

Store path .....	14
Reserved space .....	14
Tracking .....	15

## Parameter Settings

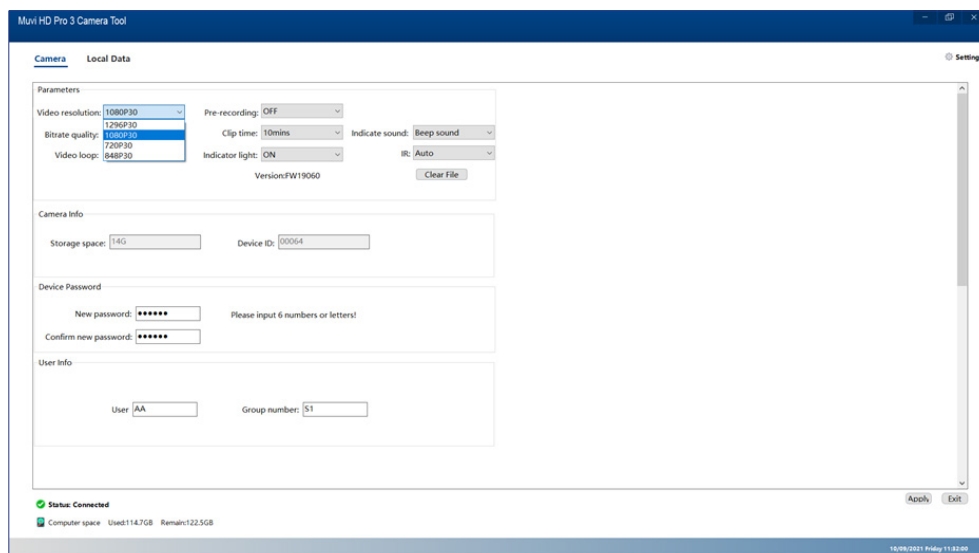
Enter the default camera password '000000' and change the operation option to 'Parameter Settings', click 'Apply' to access camera settings. We recommend updating your camera password; use your updated device password to gain access during future logins.



## Video resolution

Video resolution will determine the total amount of pixels captured (detail within the image). The higher the video resolution, the higher the video quality.

Click the downwards arrow to reveal the Video resolution drop-down menu. Select your preferred setting before hitting 'Apply' to save, a success prompt will appear for confirmation.



The below table shows approximate data usage (per hour) at different video resolutions

Video Resolution	Data Usage (per hour)
480p 30	0.88G
720p 30	1.75G
1080p 30	3.5G
1296p 30	3.95G

**Please note** - data usage is calculated using the middle bitrate, all figures are approximate and subject to external factors.

The below table shows approximate battery usage (per hour) at different video resolutions

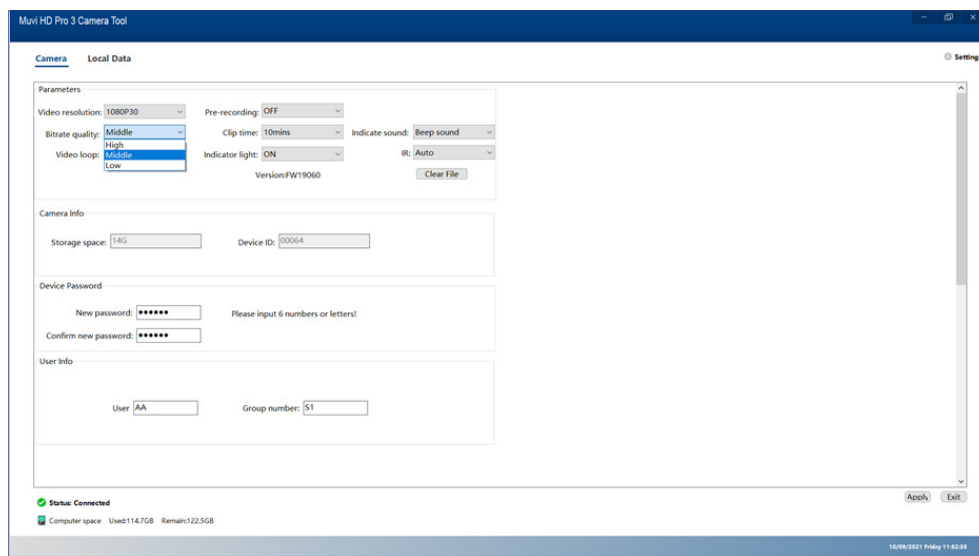
Video Resolution	Battery Usage % (per hour)	mAh
480p 30	6.11%	220mA
720p 30	6.67%	240mA
1080p 30	7.36%	265mA
1296p 30	7.92%	285mA

**Please note** - battery usage is calculated using the middle bitrate, all figures are approximate and subject to external factors.

## Bitrate quality

Bitrate quality defines video data transferred at any given time. A higher bitrate results in better video quality and therefore larger file sizes.

Click the downwards arrow to reveal the Bitrate quality drop-down menu. Select your preferred setting before hitting 'Apply' to save, a success prompt will appear for confirmation.



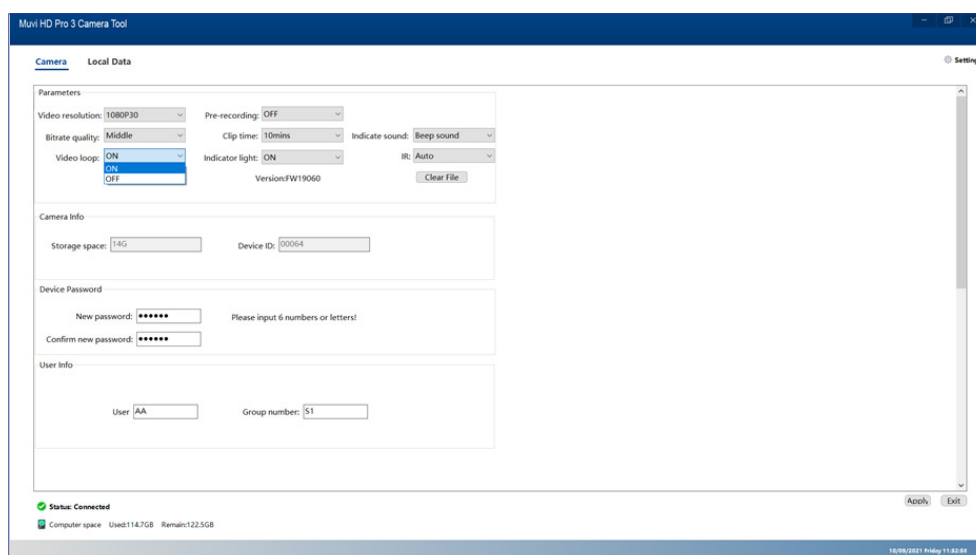
The below table shows bitrate quality at each option for every video resolution

Video Resolution	Bitrate Option	Bitrate Quality (MBps)
480p 30		
	Low	1.5
	Medium	2
	High	4
720p 30		
	Low	2.5
	Medium	4
	High	6
1080p 30		
	Low	4
	Medium	8
	High	12
1296p 30		
	Low	5
	Medium	9
	High	14

## Video loop

Loop recording enables an automatic file replacement setting. Should the camera memory become full, the oldest files will be wiped and replaced with the most recent footage.

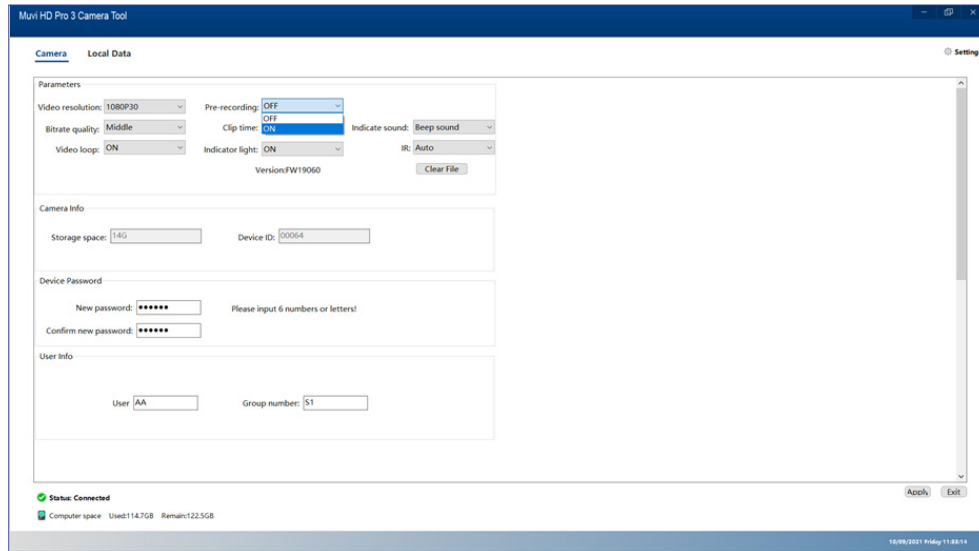
Click the downwards arrow to reveal the Video loop drop-down menu. Select your preferred setting before hitting 'Apply' to save, a success prompt will appear for confirmation.



## Pre-recording

Pre-recording enables the recording of video, for a fixed amount of time before the operation to start recording is performed. Footage can be captured from before the record button is pressed.

Click the downwards arrow to reveal the Pre-recording drop-down menu. Select your preferred setting before hitting 'Apply' to save, a success prompt will appear for confirmation.



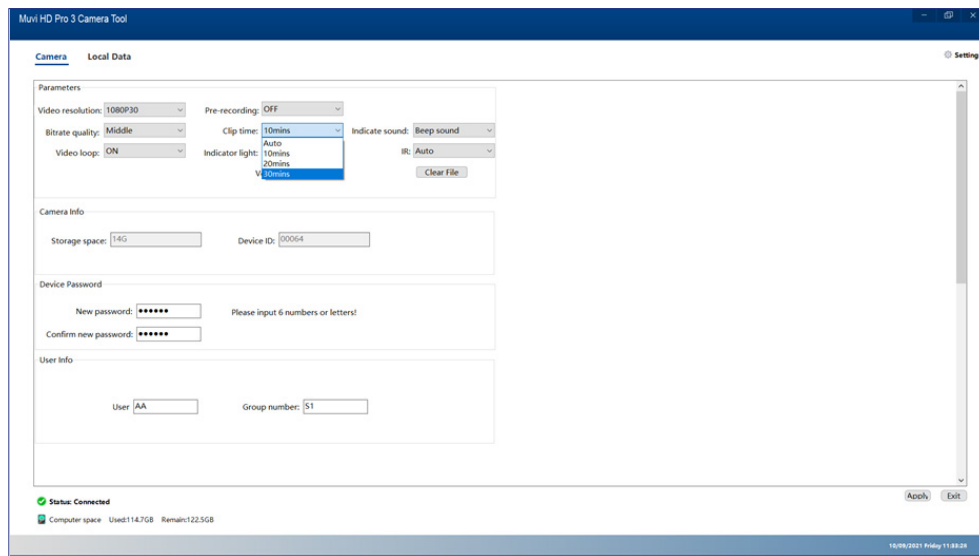
The below table shows pre-recorded clip length at each resolution

Video Resolution	Pre-record Length (Off)	Pre-record Length (On)
480p 30	N/A	15 Seconds
720p 30	N/A	10 Seconds
1080p 30	N/A	5 seconds
1296p 30	N/A	4 seconds

## Clip time

Clip time refers to the length in which each video file is saved; for example, if set to 30mins, two hours of recording will save into four separate clip files.

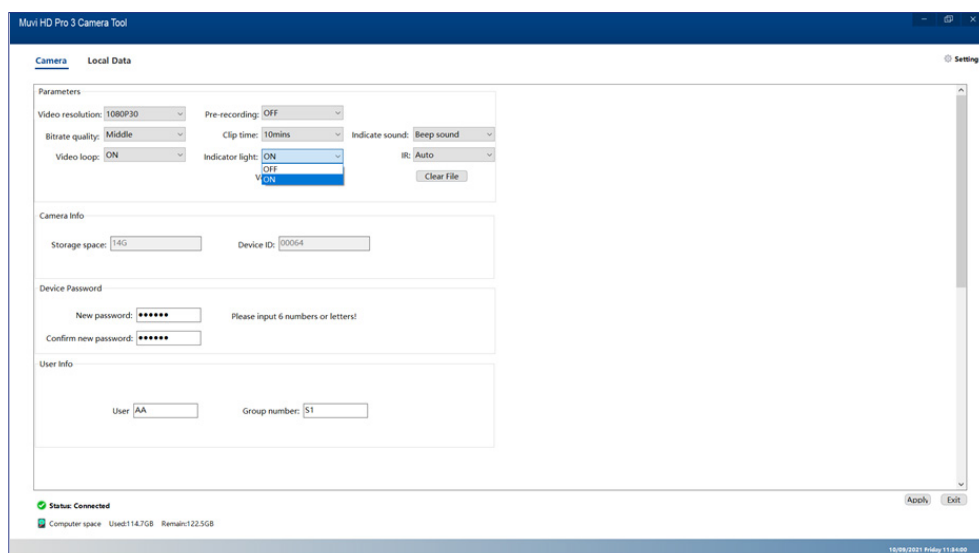
Click the downwards arrow to reveal the Clip time drop-down menu. Select your preferred setting before hitting 'Apply' to save, a success prompt will appear for confirmation.



## Indicator light

Indicator light settings will allow for the camera status LED's to be switched ON/OFF.

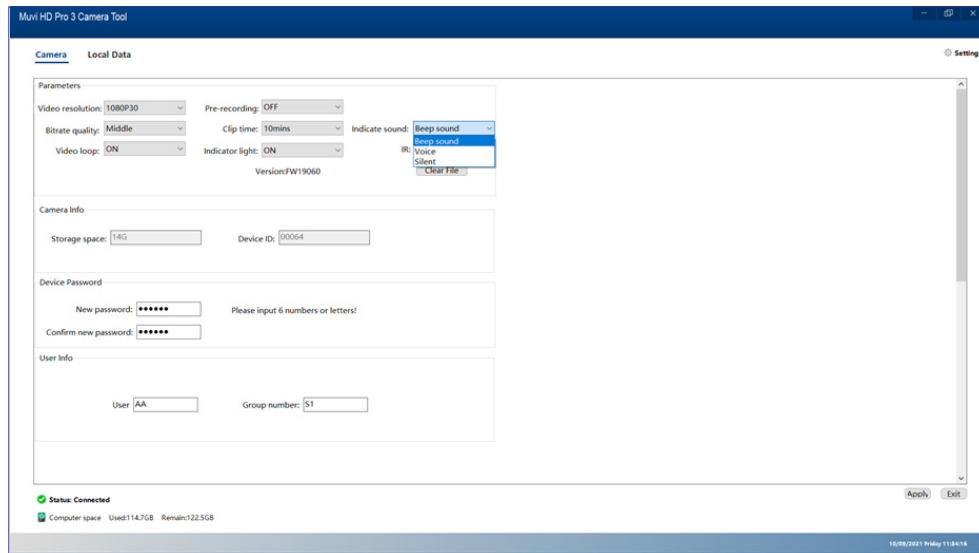
Click the downwards arrow to reveal the Indicator light drop-down menu. Select your preferred setting before hitting 'Apply' to save, a success prompt will appear for confirmation.



## Indicate sound

The indicate sound setting will allow for the camera status tones to be switched between Beep/Voice/OFF options.

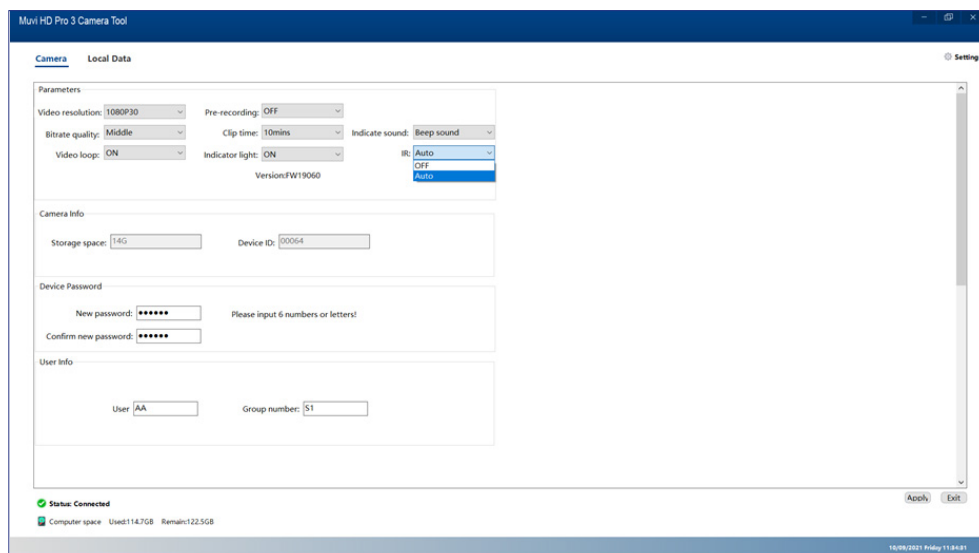
Click the downwards arrow to reveal the Indicate sound drop-down menu. Select your preferred setting before hitting 'Apply' to save, a success prompt will appear for confirmation.



## Infrared

Infrared enables very low light and night vision. If set to 'Auto', the camera infrared will automatically take over when required.

Click the downwards arrow to reveal the IR drop-down menu. Select your preferred setting before hitting 'Apply' to save, a success prompt will appear for confirmation.

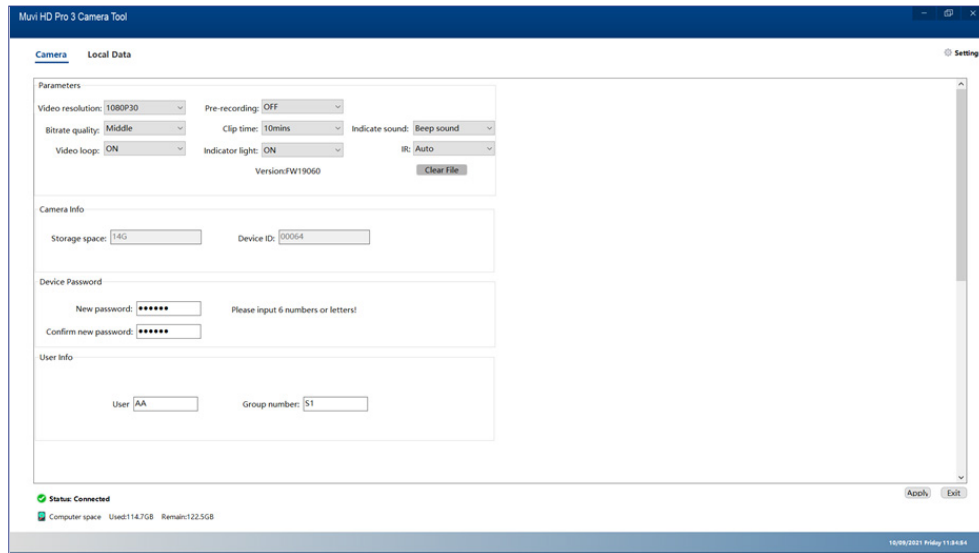


## Camera Info

### Clear file

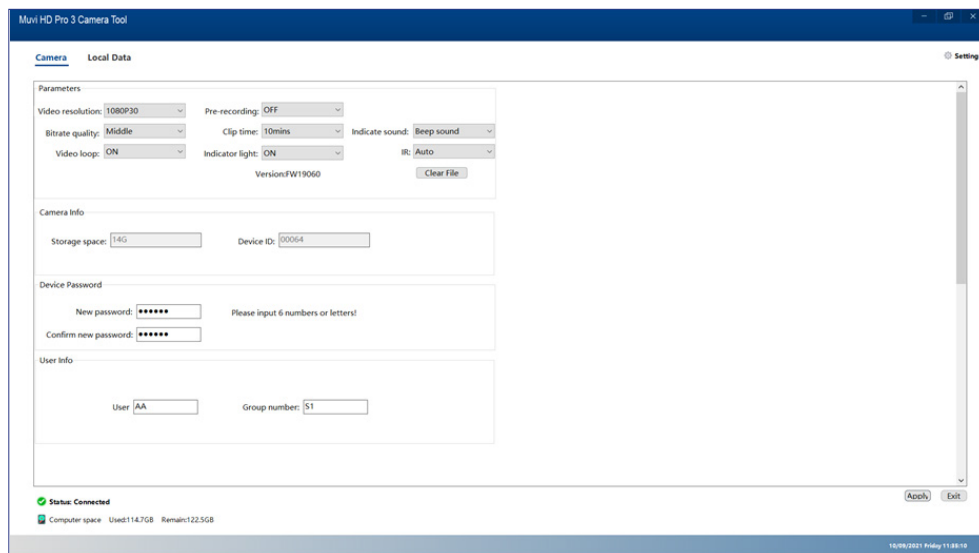
The clear file button allows for the camera to be completely wiped. Ensure to download any desired footage before wiping the unit.

Click the 'Clear File' button before hitting the 'OK' button to confirm, a success prompt will appear.



### Storage space

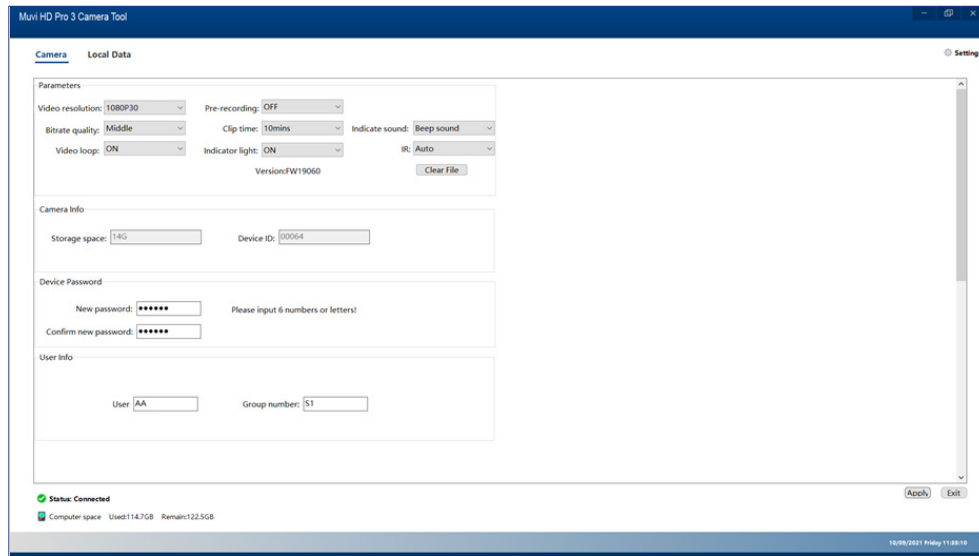
Storage space shows the remaining amount of memory within the camera.





## Device ID

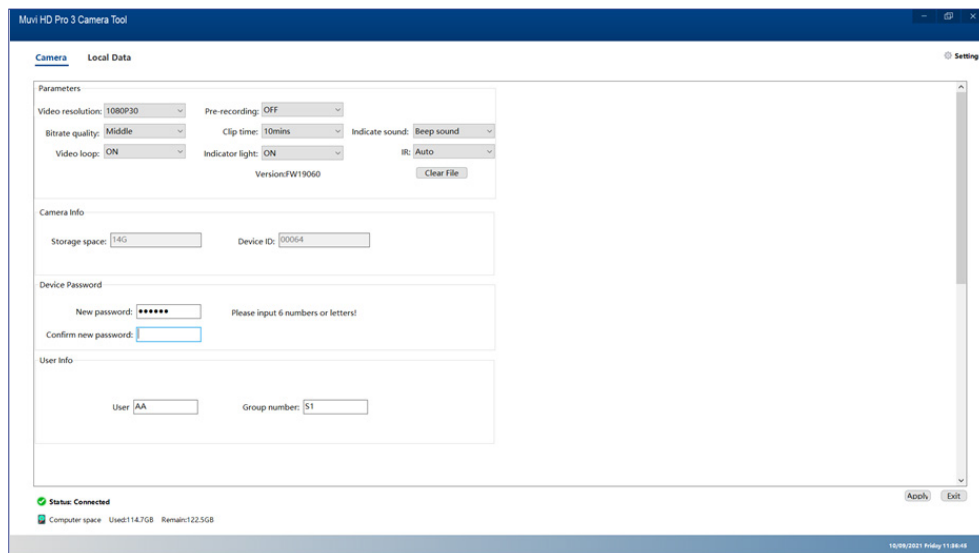
Device ID references the exact camera ID number. This can only be updated using the separate 'Muvi HD Pro 3 ID Tool' software. We do not recommend updating this from the device serial number.



## Device Password

### Password update

Device password allows for the camera password to be updated. Enter a six-digit password into the 'New password' text box using letters and numbers only. Re-type this password into the 'Confirm new password' text box before hitting 'Apply' to save, a success prompt will appear for confirmation.



## User Info

### User

The user text box should be updated with the camera operators unique name or badge number. Enter the user's name/ number into the text box before hitting 'Apply' to save, a success prompt will appear for confirmation.

The screenshot shows the 'Muvi HD Pro 3 Camera Tool' window. The 'Camera' tab is selected, and the 'Local Data' section is active. Under 'User Info', the 'User' text box is highlighted with a blue border, and the 'Group number' is set to 'S1'. The status bar at the bottom indicates 'Status: Connected' and 'Computer space: Used:114.7GB Remain:122.5GB'.

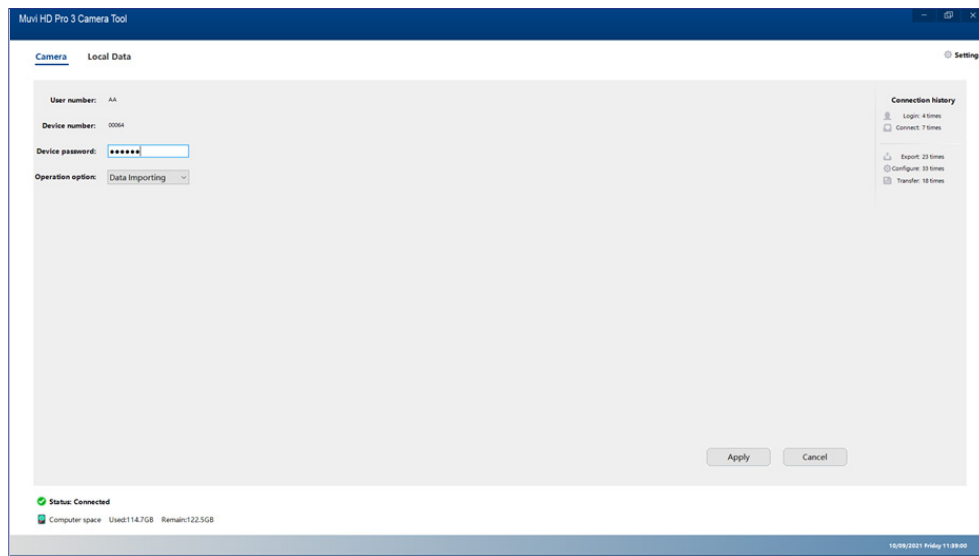
### Group number

The group number can be updated with the camera operators department. Enter the user's department name/number into the text box before hitting 'Apply' to save, a success prompt will appear for confirmation.

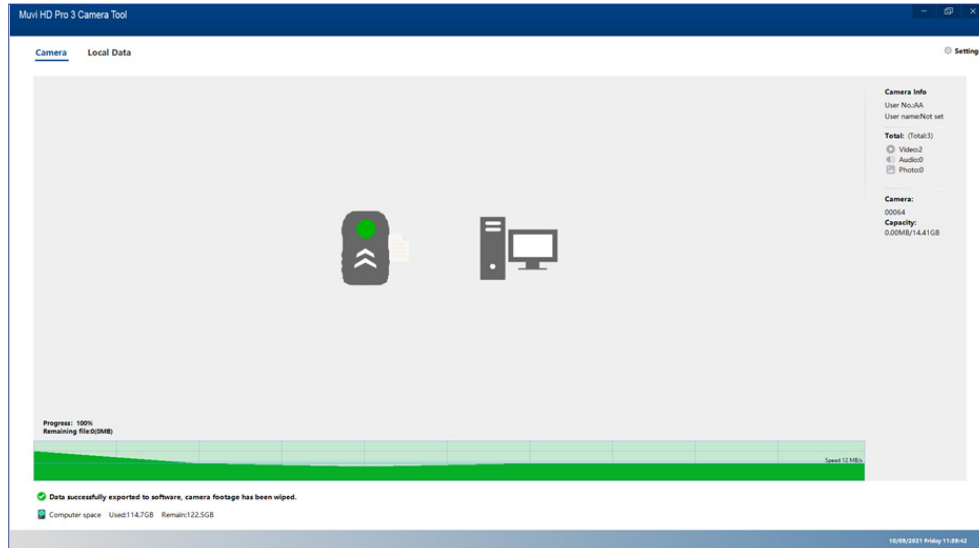
The screenshot shows the 'Muvi HD Pro 3 Camera Tool' window. The 'Camera' tab is selected, and the 'Local Data' section is active. Under 'User Info', the 'Group number' text box is highlighted with a blue border, and the 'User' is set to 'AA'. The status bar at the bottom indicates 'Status: Connected' and 'Computer space: Used:114.7GB Remain:122.5GB'.

## Data Importing

Enter your camera password and change the operation option to 'Import Data', click 'Apply', footage will immediately begin to download.

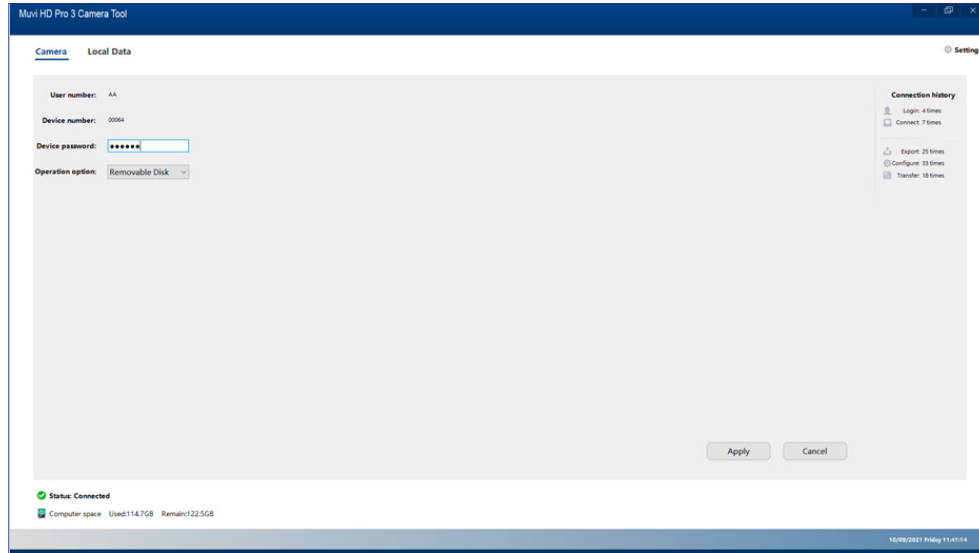


Data Importing allows for footage to be offloaded from the camera and saved locally to the Muvi HD Pro 3 Tool. Camera footage will be automatically wiped from the unit.

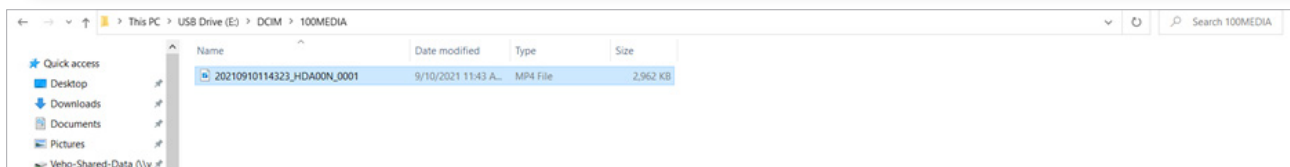
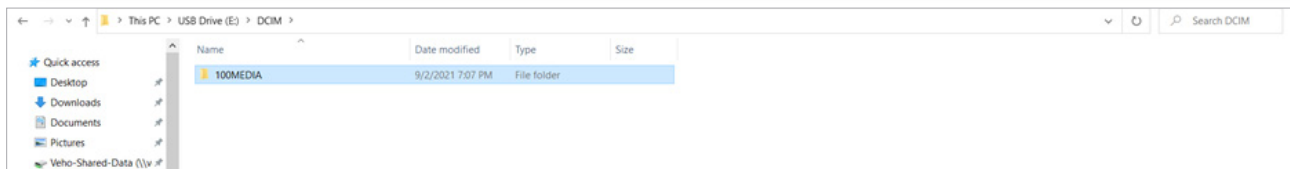
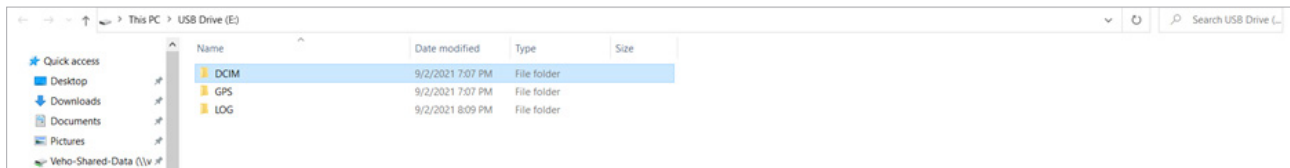


## Removable Disk

Enter your camera password and change the operation option to 'Removable Disk', click 'Apply', footage will immediately open within your PC File Explorer.

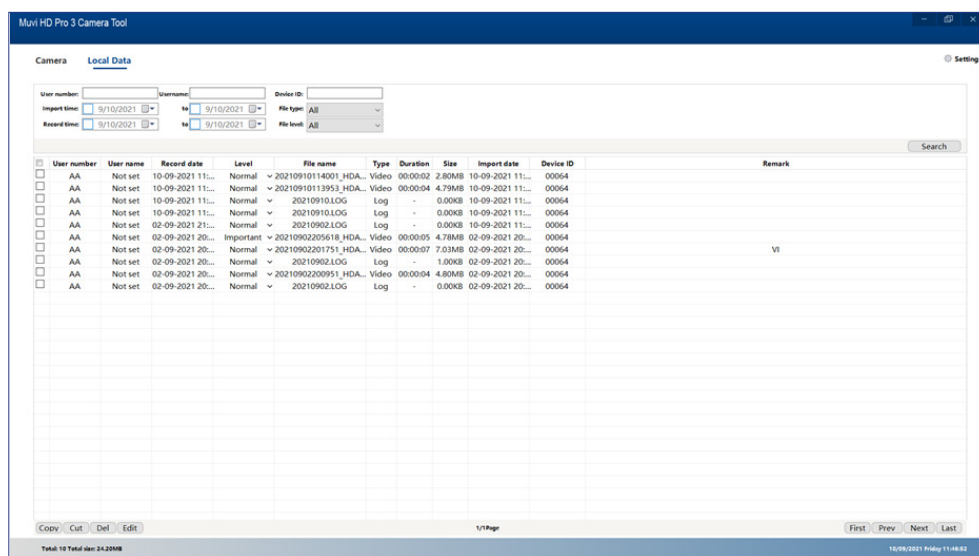


Video files can be accessed through **DCIM > 100MEDIA**



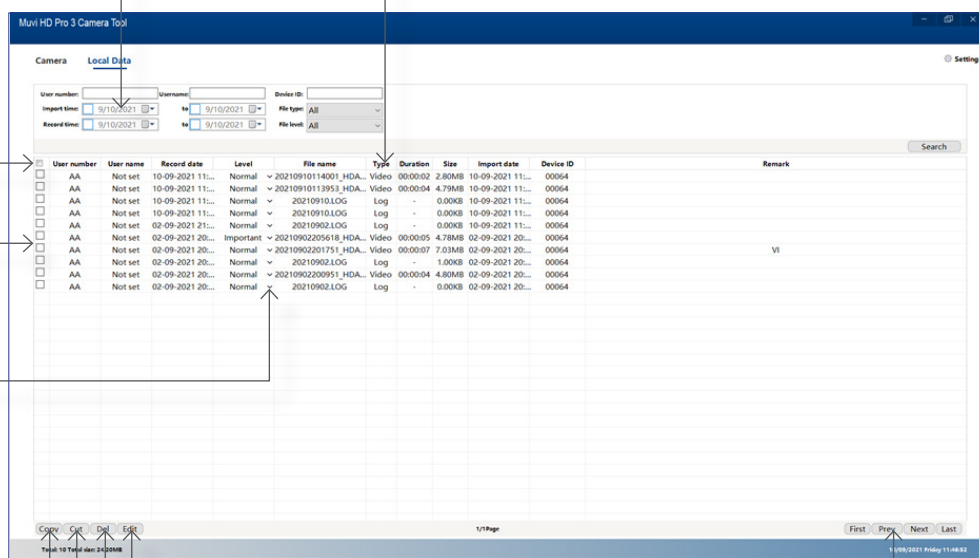
## Local Data

Click on the 'Local Data' tab to bring up video recordings and camera logs, these are files that have been saved directly to the Muvi HD Pro 3 Camera Tool.



Filter Search - Use filters to quickly navigate between saved files, click 'Search' to display results

Double click on the file type to open video / camera logs



Select all files

Select individual files

Click the download arrow and select level of importance for each file

Click 'Copy' to duplicate and save files within Windows File Explorer

Click 'Cut' to save files within Windows File Explorer. Files will be deleted from Muvi HD Pro 3 Camera Tool

Click 'Del' to permanently delete files from HD Pro 3 Camera Tool. Files cannot be recovered once deleted

Click 'Edit' to add notes to each file

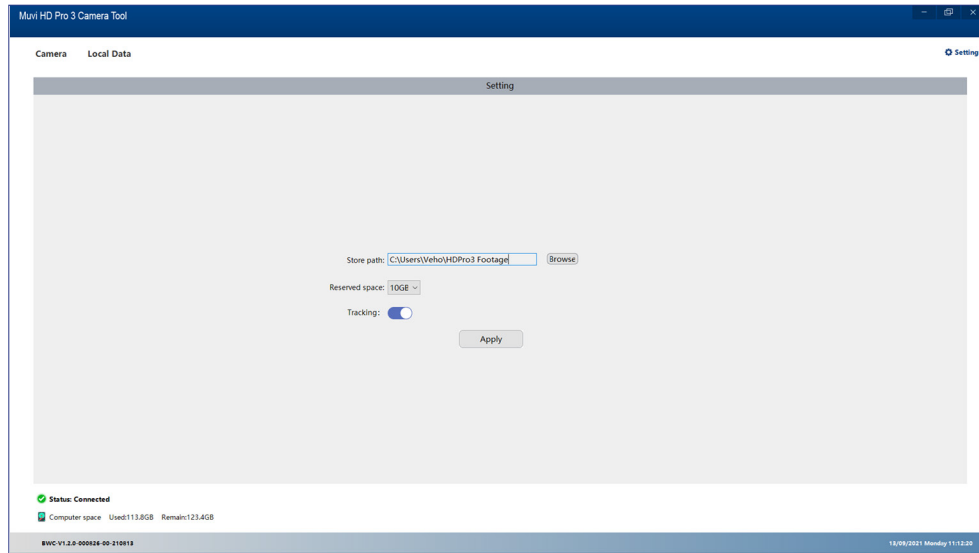
Use 'First / Prev / Next / Last' to navigate between pages

## Software Settings

Click on the 'Settings' tab to bring up software settings.

### Store path

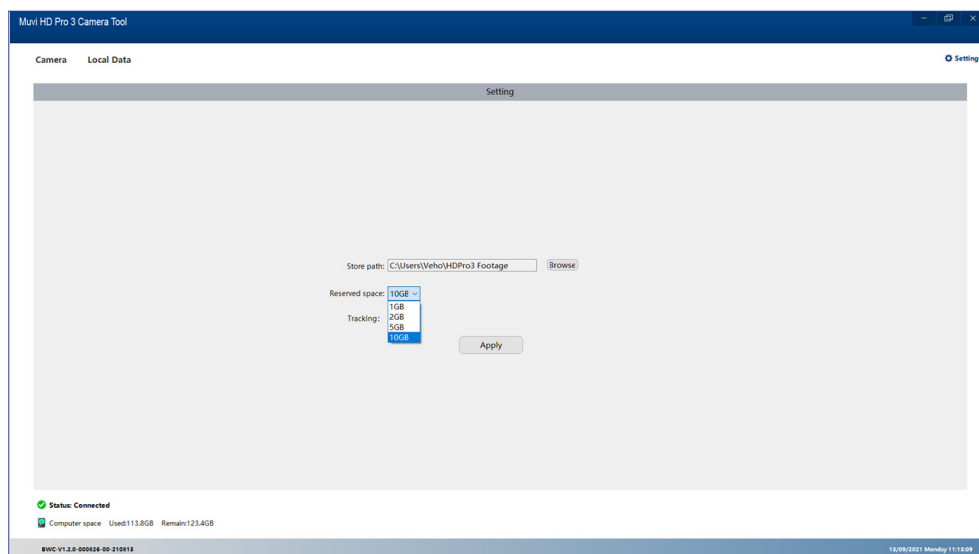
Store path allows users to pre-set a desired file route. When saving footage, this option will automatically open. Click 'Browse' to reveal Windows File Explorer. Select or create a folder before hitting 'Apply' to save, a success prompt will appear for confirmation.



### Reserved space

Reserved space allows users to enable a maximum storage capacity for the software. If this limit is reached, footage will no longer save within the HD Pro 3 Camera Tool.

Click the downwards arrow to reveal the Reserved space menu. Select your preferred setting before hitting 'Apply' to save, a success prompt will appear for confirmation.



## Tracking

Tracking allows for the camera GPS to be set On/ Off. Please note, this is only compatible with GPS models. Set Tracking on On/ Off before hitting 'Apply' to save, a success prompt will appear for confirmation.

